

# New Homes



By Todd Lewis

## OPEN TO TRADITION

PHOTOS BY JOE BRYSAN/FREEPRESS.MB.CA

Home combines BEST of BOTH WORLDS

By Todd Lewis

**W**HEN the designers at Gino's Homes conceived the design of 119 Bridlewood Road — one of their latest show homes in Bridgewater Forest — they kept one key thought in mind.

"We really listen to our customers," says Gino's marketing representative, Mark Rempel. "And we discovered that while about 70 per cent of them love open-concept floor plans, about 30 per cent of them prefer more traditional floor plans. The result is a home that has well-defined spaces, yet all the spaces — especially on the main level — flow together exceptionally well."

The centrepiece of the traditional modern design is the great room/kitchen area at the back of the 2,170-square-foot home. Instead of placing the two spaces within a wide-open area, the designers cleverly placed an angled wall between the two rooms.

"I think it's a great idea, because it defines where each room begins and ends, yet maintains an easy flow between the two areas," he says. "There's a lit art niche on the great room side of the wall, while there's floating shelving and (granite-topped) storage cupboards on the other side. It's a new design, and it works."

In essence, the dividing wall creates a pair of spaces with distinct personalities. The great room, with its 18-plus-foot ceiling and floor-to-ceiling windows exudes a bright expansive feel, while the kitchen

strikes a perfect balance between coziness and having enough room to move; aisle width is in the five-foot range, while the espresso (maple) cabinets and cappuccino maple hardwoods — along with dark granite counter tops — warm up the surroundings.

There's also plenty of dining space to be found, what with room for a four-seat table at the end of the kitchen (by a deck door and big window) — and very traditional front-oriented formal dining room that has an extra-wide entrance for ease of access. Even though there's a good deal more segmentation than in an open-concept floor plan, flow is never an issue.

"It's a very convenient layout. The feel is more traditional than wide-open, and many people who have come to view the home like that option," Rempel says. "But it works because the designers put a lot of thought into the design. There's also a main level laundry room off the great room, and the (ceramic tile) foyer is extra long so that a bench can be placed by the stairs near the great room."

Fit and finish throughout the home is also impressive, and tasteful. All baseboards and door casings are dark cappuccino maple, and doors are solid wood. To inject a modern touch into the home's design, the maple bannister on the L-shaped staircase leading to the upper level was outfitted with clear tempered glass to allow light to filter freely through both the upper and lower levels.

Whereas the main level might be considered more traditional than modern in its design, the

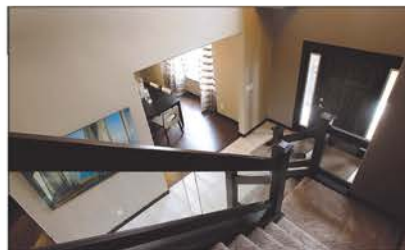
upper level is unreservedly modern. A catwalk-style landing spreads out on either side of the staircase, while light from the huge windows in the great room (and big window over the foyer entrance) shower the space in natural light.

Rempel says the catwalk design yields one main benefit. "It allows for the master bedroom to be secluded on one side, while the secondary bedrooms are on the other with the four-piece main bathroom," he explains. "Just like the main level, everything has its place. And just as important, everyone has their own space, and plenty of it. Both secondary bedrooms are huge, big double closets, and the main bathroom is also bigger than normal."

Not only is the master bedroom off by its lonesome — something that war-weary parents will no doubt appreciate after a challenging day at work or with the kids — but it also houses several novel features.

"The bedroom is spacious and bright (thanks to three more windows)," Rempel says. "Like the main level, it's segmented. There are his/her walk-in closets on either side of the hallway leading to the ensuite. And the ensuite itself is very private and well-appointed, with a six-foot jetted tub, four-foot tempered glass shower, his and her sinks on white marble and an off-white ceramic tile floor. Quality and style abounds in this home."

With more than 1,200 square feet of space to develop down stairs — and a price tag of \$499,900 (not including GST), 119 Bridlewood offers as much value as it does style.



### Gino's Homes

**ADDRESS:** 119 Bridlewood Road, Bridgewater Forest  
**SIZE:** 2,170 sq. ft.  
**STYLE:** Two-storey  
**PRICE:** \$499,900 (includes, lot, GST extra)  
**LOT SIZE:** 58' x 109'  
**LOT PRICE:** \$125,000  
**CONTACT:** Mark Rempel @ 989-5000



Formal dining room is separate from main living area, but it has a large entranceway for easy access.



The kitchen is cozy, but it also has plenty of room to move.



Ensuite features a large, jetted tub and separate glass shower enclosure.



Master bedroom is well separated from the kids' bedrooms, and feature two walk-in closets.



An 18-foot ceiling and full length windows make great room stunning.